



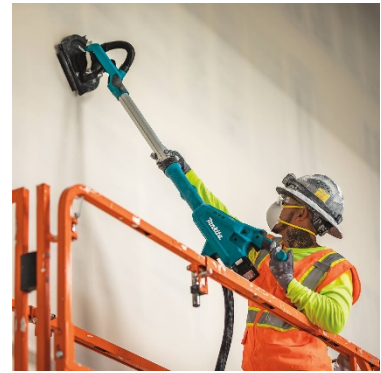
MEDIA CONTACTS
Wayne Hart
(714) 522-8088 x4410
whart@makitausa.com

Jennifer Morse
(714) 522-8088 x 4401
jmorse@makitausa.com

Consumer Inquiries:
(800) 4-MAKITA
makitatools.com
[@makitatools](https://twitter.com/makitatools)

FOR IMMEDIATE RELEASE

The new 18V LXT
Brushless Cordless 9"
Drywall Sander is the
world's first cordless
drywall sander.



MAKITA ANNOUNCES WORLD'S FIRST CORDLESS DRYWALL SANDER

Increase efficiency and mobility with the 18V LXT® Brushless Cordless 9" Drywall Sander

July 3, 2019, La Mirada, CA – Makita U.S.A., Inc. is excited to introduce the world's first cordless drywall sander. The 18V LXT® Lithium-Ion Brushless Cordless 9" Drywall Sander (XLS01) allows users to sand drywall across various wall orientations throughout the drywall finish phases of level 1 thru 5. It's part of Makita's complete range of cordless drywall solutions.

Drywall Sander Performance

A direct-drive BL™ Brushless Motor eliminates carbon brushes, enabling the motor to run cooler and more efficiently for longer life. The motor is positioned at the sanding head for increased sanding efficiency and reduced maintenance. With one 18V LXT 5.0 Ah Battery, the motor delivers up to 35 minutes of run-time, using 120 grit abrasive.

Design of the Drywall Sander

The highly flexible head swivels for increased maneuverability across various wall orientations, whether sanding vertical walls or ceilings. The removable dust brush with easy glide roller wheels allows for seamless flush-to-wall edge sanding.

The XLS01 is lightweight, weighing 10.7 lbs. with battery. The compact size allows users to sand confined spaces such as closets. For high walls and ceilings, the handle extends 16-1/2" with a telescoping design that allows for quick adjustments. An optional extension handle support set (199937-7, sold separately) allows an additional 22-3/4" longer reach for high walls and ceilings and eases the weight of the drywall sander for reduced operator fatigue.

Two rubberized soft grip handles provide increased comfort and easier maneuverability of the sander.

Technology within the Drywall Sander

Speed Controls

A variable speed control dial allows manual adjustment so the user can match the speed to the application. This helps minimize damage to wall textures during the initial start and reduces motor overload. The sander reaches speeds of 1,000-1,800 RPM. A soft start suppresses start-up reaction for smooth start-ups and longer gear life. Constant Speed Control automatically applies additional power to the motor to maintain speed under load and a large two-finger power trigger switch will lock-on for continuous operation.

Overload Sensor

An overload sensor will alert the user when excessive load is applied in order to protect damage to the tool due to overheating.

Star Protection Computer Controls™

For improved tool performance and extended battery life, Makita created Star Protection Computer Controls. Star Protection is communication technology that allows the Star Protection-equipped tool and battery to exchange data in real time and monitor conditions during use to protect against overloading, over-discharging and overheating. For increased versatility, the tool can also be powered by Makita® 18V LXT Lithium-Ion Batteries with the star symbol indicating Star Protection inside.

Dust Management

Be completely cord-free with a Makita Dust Extraction Solution. Auto-Start Wireless System (AWS™) uses Bluetooth® technology for wireless power-on and power-off communication between the equipped tool and dust extractor. Once connected via AWS, the AWS-equipped dust extractor will automatically power on or off when the AWS-equipped cordless tool starts or stops, running only when the tool is in use. This increases productivity on a single charge and reduces continuous noise at the job or work site.

Connect the drywall sander to the new 4 Gallon 18V X2 (36V) LXT Brushless HEPA Filter Dry Dust Extractor (XCV16ZX, sold separately) and automatically collect drywall dust during operation.

18V LXT® System

The Makita LXT Cordless System, the world's largest cordless tool system powered by 18V lithium-ion slide-style batteries, takes a user from power tools to outdoor power equipment to get the job done. Makita 18V LXT Batteries power have the fastest charge times in their categories, so they spend more time working and less time sitting on the charger.

The drywall sander is available as a bare tool or a kit. For more information, please visit makitatools.com

Specifications

| Model | XLS01T | XLS01Z |
|------------------------------------|--|--|
| Description | 18V LXT® Lithium-Ion Cordless 9" Drywall Sander Kit, AWS Capable | 18V LXT® Lithium-Ion Cordless 9" Drywall Sander, AWS Capable, Tool Only |
| Abrasive Disc Size | 9" | 9" |
| No Load Speed | 1,000-1,800 RPM | 1,000-1,800 RPM |
| Variable Speed Control Dial | Yes | Yes |
| Battery | 18V LXT® Lithium-Ion | 18V LXT® Lithium-Ion |
| Dimensions | 59-3/4" x 10-1/4" x 10-3/4" | 59-3/4" x 10-1/4" x 10-3/4" |
| Net Weight | 10.7 lbs. (with battery) | 10.7 lbs. (with battery, sold separately) |
| Includes | Tool, (2) 18V LXT Lithium-Ion 5.0Ah Battery, Rapid Optimum Charger, 9" round Sanding Backing Pad Hook & Loop – Soft, 9" Round Abrasive Disk Hook & Loop - 120 Grit, Tool Bag, Hex Wrench | Tool, 9" round Sanding Backing Pad Hook & Loop – Soft, 9" Round Abrasive Disk Hook & Loop - 120 Grit |

About Makita

Makita is a worldwide manufacturer of industrial power tools, pneumatics and power equipment, and offers a wide range of industrial accessories. Makita U.S.A., Inc. is located in La Mirada, California, and operates an extensive distribution network throughout the U.S. Call 800/4-MAKITA or visit makitatools.com. Find Makita on Facebook, Twitter, Instagram and YouTube @makitatools

#